

CUSTOMER \_\_\_\_\_  
 CUSTOMER PART # \_\_\_\_\_  
 WELFORM 3-5 # \_\_\_\_\_

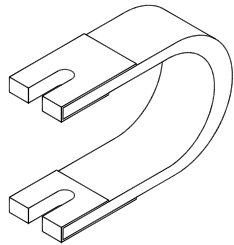
# SHUNT ORDER FORM

WORK ORDER # \_\_\_\_\_  
 CUSTOMER PHONE # \_\_\_\_\_

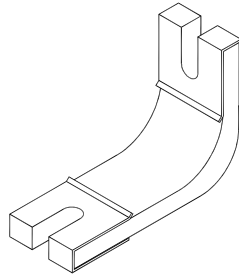


## 1) SHUNT STYLE

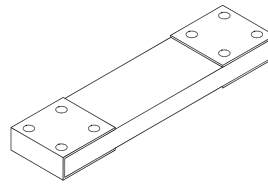
C-TYPE



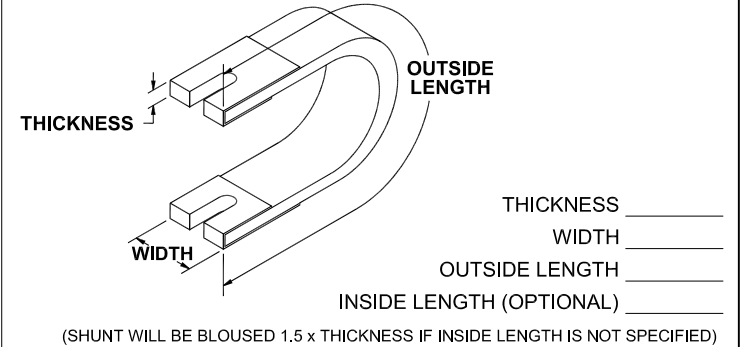
PINCH / L-TYPE



FLAT / S-TYPE

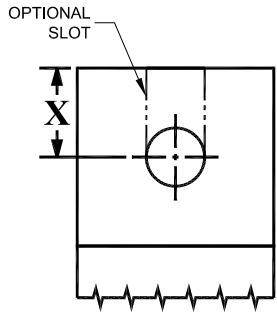


## 2) DIMENSIONS



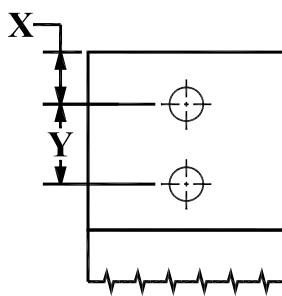
## 3) HOLE / SLOT SPECIFICATIONS

SLOT  PATTERN-A  
 END 1

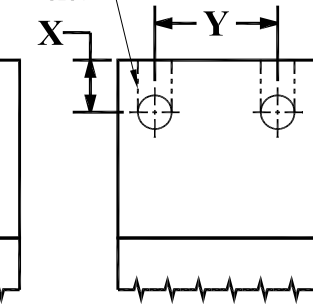


END 2   
 SLOT

PATTERN-B

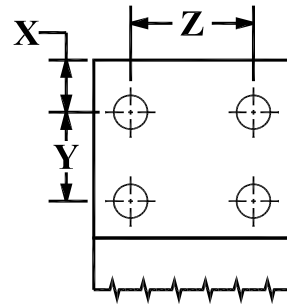


SLOT  PATTERN-C  
 OPTIONAL SLOT

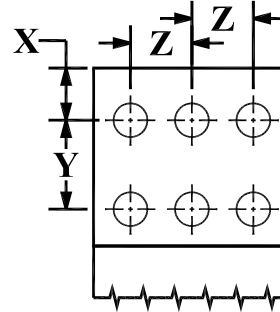


SLOT

PATTERN-D



PATTERN-E



END 1				Ø
DIM	X	Y	Z	HOLE / SLOT SIZE
END 2				Ø

END TREATMENT (CHOOSE ONE PER END)		
END 1	STYLE	END 2
	FUSED	
	PLATE	
	LOOSE	
	OTHER	

## 4) PLATE INFORMATION

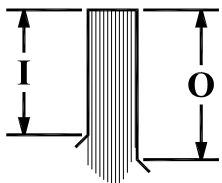


PLATE THICKNESS  
 .06" [1.6mm]   
 .12" [3.2mm]   
 .19" [4.8mm]   
 .25" [6.4mm]

PLATE DIMENSIONS		
END 1	DIM	END 2
	OUTSIDE	
	INSIDE	

PLATE FLARES		
END 1	YES/NO	END 2
	OUTSIDE	
	INSIDE	

## 5) MATERIAL / SILVER PLATING

MATERIAL THICKNESS (CHOOSE ONE)	
	.005" THICK
	.010" THICK

SILVER PLATING		
END 1	YES/NO	END 2
	OUTSIDE	
	INSIDE	

## 6) INSULATION

INSULATION	
	INSIDE
	OUTSIDE

**WELFORM ELECTRODES**  
 2147 KENNEY  
 WARREN, MICHIGAN 48091  
 PHONE: (586) 755-1184 FAX: (586) 755-5639  
 WWW.WELFORM.COM